



JOHNS HOPKINS

INSTITUTE *for* CLINICAL &
TRANSLATIONAL RESEARCH

Third Thursday Presentation: March 20, 2025

Community and Collaboration Core and the services of the Community Research Advisory Council

Roger Clark, MBA, Pamela Ouyang MBBS, and Crystal Evans, MS

Objectives



- To introduce the resources of the Community and Collaboration Core and the services of the Community Research Advisory Council (C-RAC).
- To share how to access the services of C-RAC.
- To learn more about what C-RAC can provide to research teams and investigators.

About ICTR's Community and Collaboration Core

The Community and Collaboration Core (CCC) assists and trains research teams and community partners to promote sustained community engagement and effective multidisciplinary collaboration throughout the research life cycle.

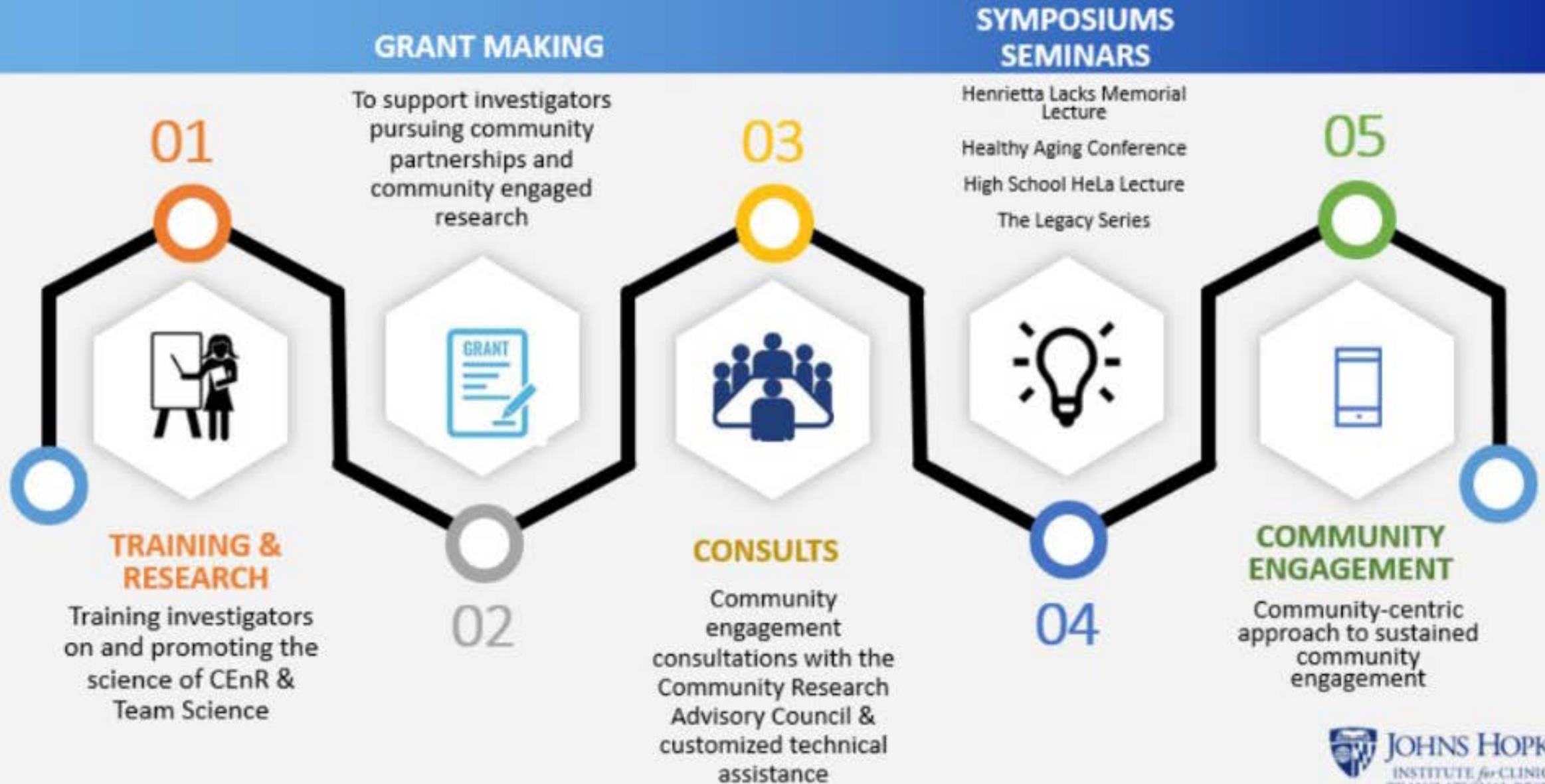
Community Awareness and Outreach

Training and Technical Assistance

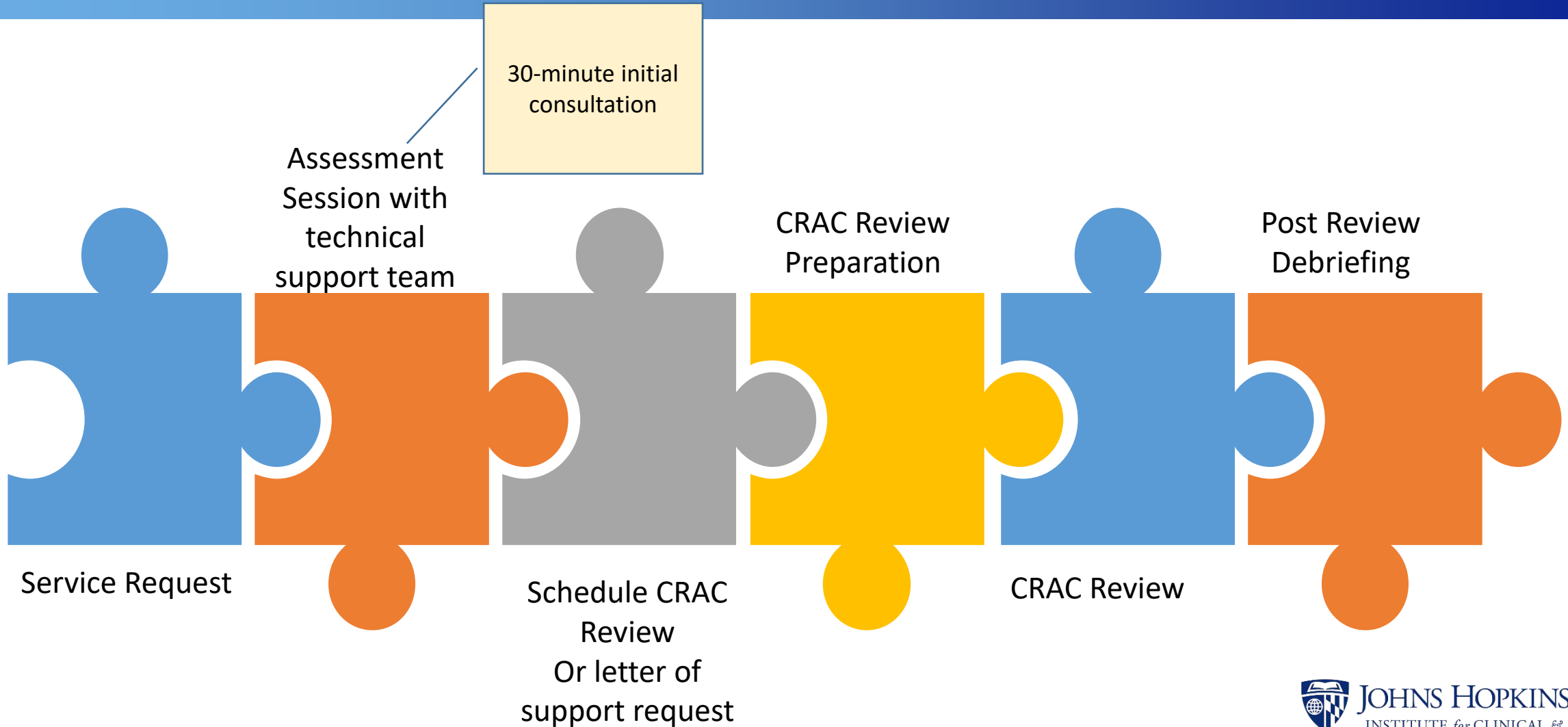
Research and Scholarship

Maximizing Research Impact

Community and Collaboration Core Resources

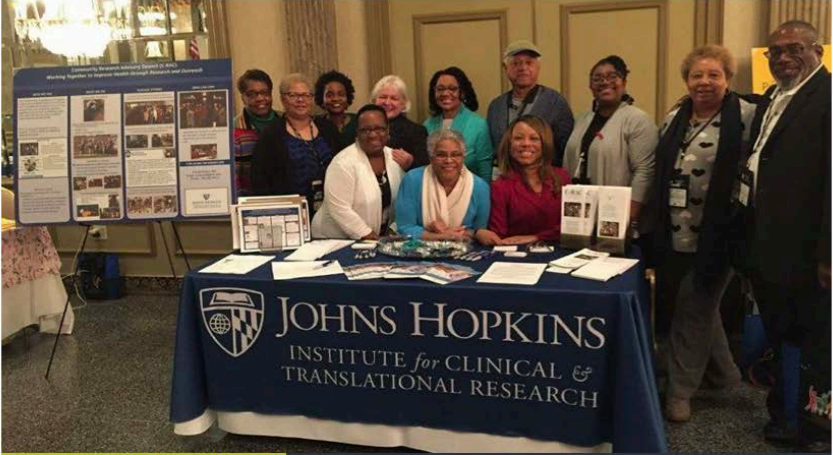


Community Engagement Technical Assistance Request



Community-Engaged Research Consultations with C-RAC

- 45-minute virtual meeting
- Consultants provide community-centered review of study design, including:
 - Recruitment
 - Communications
 - Implementation
 - Dissemination
- Mondays, from 5 -6 pm



**COVID-19 Expedited
Community-Engaged Research
Consultation**

A service for researchers investigating the impact of the COVID-19 pandemic.

Format

- ✓ 45-minute virtual meeting
- ✓ Consultants provide participant-centered review of study design in preparation for COVID-19 IRB submissions including:
 - Recruitment
 - Communications
 - Implementation
 - Dissemination

Day/Time
Mondays, 5 PM – 6 PM


For more information, contact:
ICTR-CRAC@jhmi.edu

**COMMUNITY RESEARCH
ADVISORY COUNCIL (C-RAC)**

For over 10 years, the Community Research Advisory Council of the Johns Hopkins Institute for Clinical and Translational Research (ICTR) has provided research reviews and *Community-Engaged Research Consultations* to the Institutional Review Board, departments, and research teams throughout all phases of the research process. Our aim is to provide the 'real world' perspectives of patients, community members and diverse stakeholders to Johns Hopkins research teams at any stage of the study design process. Our council includes patients, local residents, healthcare providers, scientists, students, and representatives from state and local organizations.

The C-RAC is part of Johns Hopkins ICTR's community collaboration efforts to provide technical assistance and build the capacity of researchers to rapidly respond and discover solutions to address the COVID-19 pandemic and other health concerns that impact our patients, our neighborhoods, and our communities.

**Because
we are all
in this together.**

 **JOHNS HOPKINS**
INSTITUTE for CLINICAL &
TRANSLATIONAL RESEARCH

Release: 5/11/2020 DRAFT

Why was the Community Research Advisory Council formed?

- Leadership at Johns Hopkins University wanted to become more informed about the health and research priorities of patients and local residents
- The Johns Hopkins University Institute for Clinical and Translational Research wanted to create a forum for ongoing community input in the research process.
- Patients and local residents wanted to become more involved in the research process.
- From 2010-2018 there were chapters on the Johns Hopkins East Baltimore Medical Campus and Johns Hopkins Bayview. In 2019, these chapters merged to form the Combined C-RAC Board. .

ICTR Community Research Advisory Council (C-RAC)

A volunteer board formed in 2009 to connect researchers and community members

Mission

The Community Research Advisory Council (C-RAC) aims to promote trust, understanding, and involvement of the Greater Baltimore-Washington region in research, education, and service activities to enhance overall health, reduce health disparities, and promote social justice.

Goals include:

- Promoting equitable access to health care in research and address health disparities and social justice in study design
- Improving community awareness, trust, knowledge, understanding and participation to all phases of the research continuum
- Improving researchers' commitment to a fully engaged community within the entire research process

C-RAC Membership

C-RAC Membership

- As of March 2025, C-RAC had 25 members: 61% were not JH affiliated (Bylaws require at least 51% non-JH affiliates)
- Membership is open for all people working or living in Greater Baltimore-Washington region, interested in community engagement in Research
- Individuals with various ages, professions, background, and expertise are encouraged to reflect the diversity in the Greater Baltimore- Washington region



WHO WE ARE

The Community Research Advisory Council (C-RAC) is a group of community stakeholders and Johns Hopkins University faculty and staff that provides consultations for study teams on community engagement throughout the research life cycle, from planning to dissemination of findings. By working together with research teams and faculty, C-RAC informs research and educational programs and promotes community health and knowledge.

PATIENTS
HEALTHCARE PROVIDERS
LOCAL RESIDENTS CITIZEN SCIENTISTS
RESEARCHERS STUDENTS TEACHERS
**REPRESENTATIVES FROM LOCAL
& STATE ORGANIZATIONS**



57%

of C-RAC members
are from the
community



77%

of members identify
as belonging to
communities of
color

Strategies to strengthen community engagement

1

- LISTEN

2

- BE UNDER-
STANDABLE

3

- BE A TRUSTED
PARTNER

4

- GIVE BACK

C-RAC: How we engage research teams and the community?



10-Step Framework For Continuous Engagement

PLANNING

- 1: Topic Solicitation
- 2: Prioritization
- 3: Framing the question
- 4: Selection of outcomes

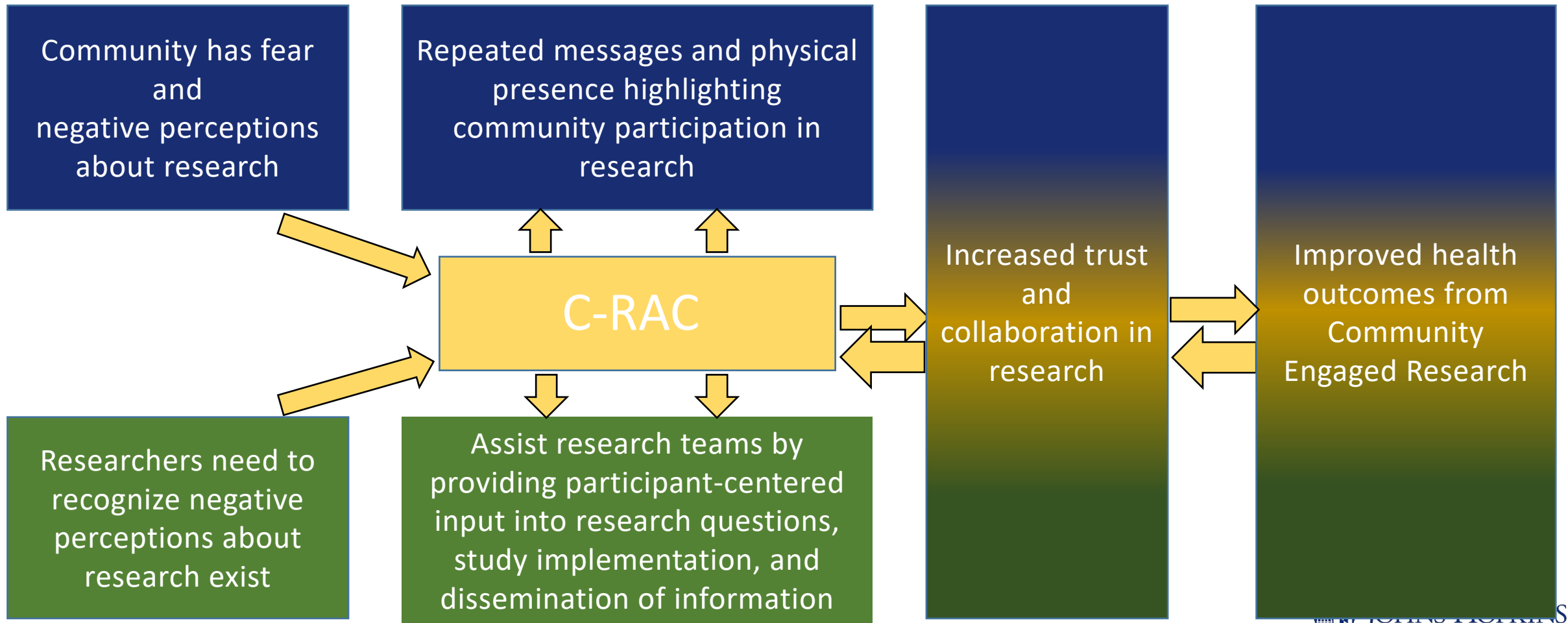
IMPLEMENTATION

- 5: Create the framework
- 6: Develop analysis plan
- 7: Data collection (recruitment and retention)

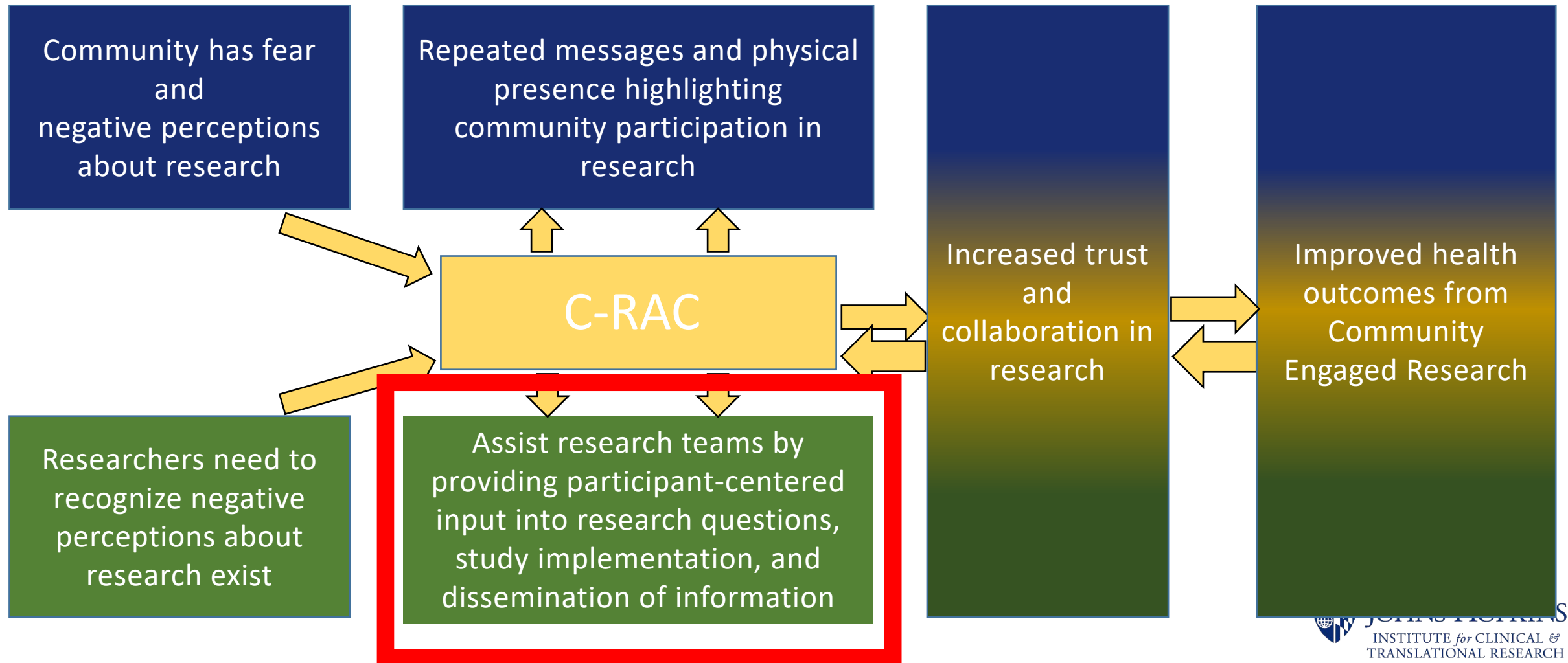
ANALYSIS & DISSEMINATION

- 8: Reviewing and interpreting results
- 9: Translation
- 10: Dissemination

C-RAC provides an opportunity for bi-directional interchange between community and researchers



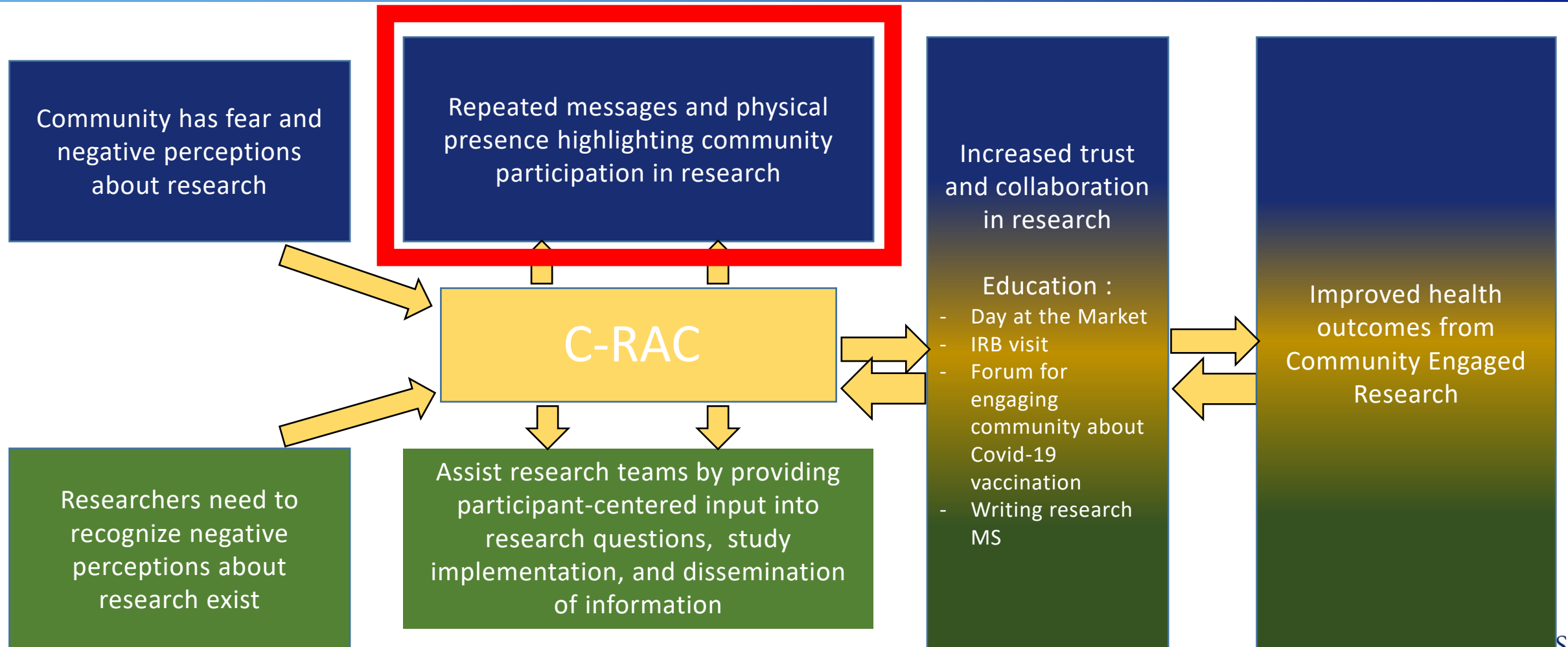
C-RAC provides an opportunity for bi-directional interchange between community and researchers



C-RAC: assistance to researchers

- As an example of staying relevant to medical issues, C-RAC pivoted and responded to the needs of over 18 research teams during the pandemic:
 - Promoted community capacity for remote engagement
 - Developed expedited review consultation for research teams
 - Increased meetings from quarterly to weekly to meet the needs of research team providing solutions during the pandemic
 - Maintained a high level of engagement from our community stakeholders that remains consistent 18 months into the pandemic
 - The frequency of meetings forged a highly integrated, high-performance team comprised of community and academic partners

C-RAC provides an opportunity for bi-directional interchange between community and researchers



C-RAC: Examples of responding to community needs/interests

Examples of Opportunities:

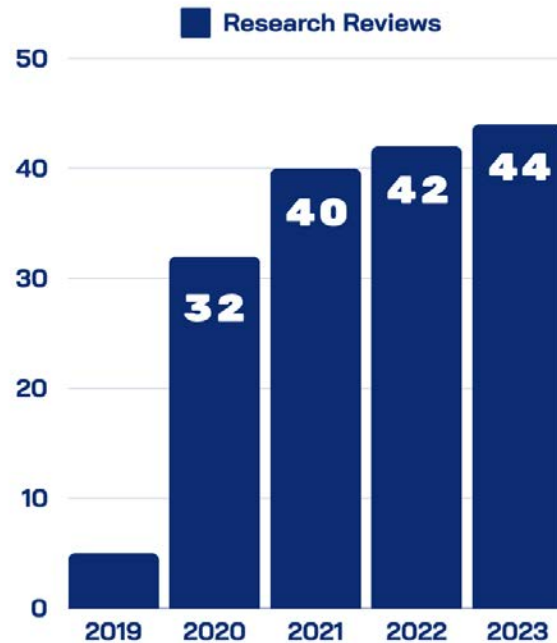
- Day at the Market (Northeast Market and Lexington Market)
- Healthy Aging Community Forum
- Visit to the IRB
- Community Conversation: We asked community stakeholders what they wanted to know about research and COVID-19.
 - “I want to know that there are people like me working with researchers about those issues that matter to me and my community.”
- Virtual Henrietta Lacks Symposium
- Educate our C-RAC members about the research process.
 - Writing research manuscript. C-RAC members are invited to write/collaborate on manuscripts
- ⑩ Research ethics and the IRB

How does community engagement help your research?

- Research will be helped by engaging the Community and understanding their priorities throughout the entire trajectory of research from the point of developing the research goals, design, implementation, and dissemination.
- Meaningful and sustained connections with the Community will help research teams successfully complete studies.
- C-RAC is committed to:
 - Strengthening bi-directional trust between research teams and community.
 - Helping researchers gain the communities' trust.

Impact of the collaboration

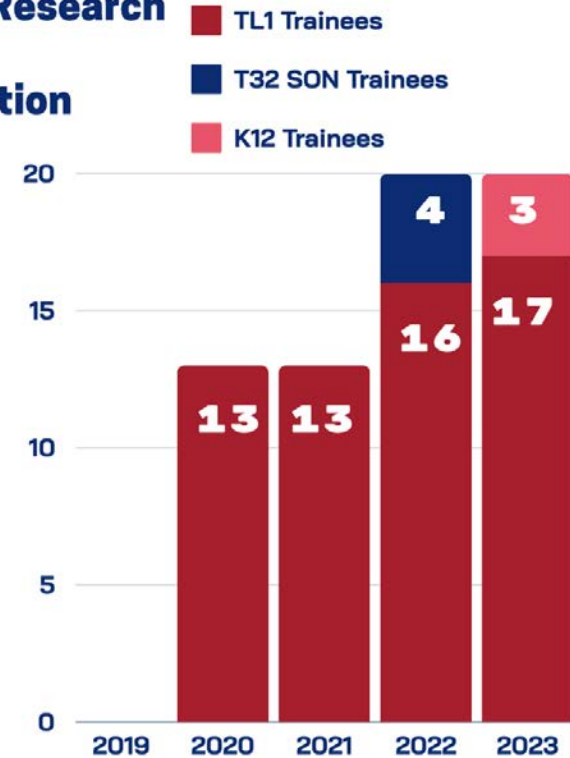
Research Reviews



18

COVID-related
studies reviewed in 2020-2022

Community-engaged Research Training Collaboration



6

Cohorts supported
& mentored by
C-RAC

66

Trainees
supported and
mentored by C-RAC

Points for consider for research teams



- C-RAC can contribute to the research team
 - C-RAC consultation – community perspectives on your research
 - Letters of support
 - Will this be a useful contribution to the community?
- Build it and they will come.
 - Continued feedback from community members and partners require compensation and technical support.

POST-EVENT SURVEY



- <https://t.jh.edu/sv5E94>

For more information, visit [Community Research Advisory Council \(C-RAC\) – Institute for Clinical and Translational Research](#) or contact ictr-c-rac@jhmi.edu

Thank you.