

# Learning Health Systems:

## Working at the Intersection of Research, Operations & Big Data



**Friday, May 5, 2017 ■ 8:00-1:00p.m.**

### EVENT DETAILS

Join us for a half-day symposium focused on the use of clinical and research data to improve the learning health care system. Events begin with check-in, breakfast and a short poster session (tentatively). The morning program will be followed by lunch and breakouts, 12:00 pm - 1:00 pm. On the registration form, please indicate what activities you will participate in.

### RSVP HERE:

<https://learninghealthsystemsmay5.eventbrite.com>

### AGENDA

- 8:00 am – 8:30 am: Check-in, Breakfast, Poster Session
- 8:30 am – 9:00 am: Welcome and What's New with the BSSS TRC?
- 9:00 am – 9:45 am: Patricia Brown, Esq.
- 9:45 am – 10:45 am: Karina Davidson, PhD
- 10:45 am – 10:55 am: BREAK
- 11:00 am – 11:45 am: Casey Overby, PhD
- 11:45 am – 12:00 pm: Wrap-Up and Instructions for Afternoon
- 12:00 pm – 1:00 pm: Lunch and Breakouts



### MEET OUR PRESENTERS:

#### Patricia M.C. Brown, Esq

Senior Vice President, Managed Care and Population Health,  
Johns Hopkins Medicine

President, Johns Hopkins HealthCare LLC

Senior Counsel, Johns Hopkins Health System

#### Karina Davidson, PhD

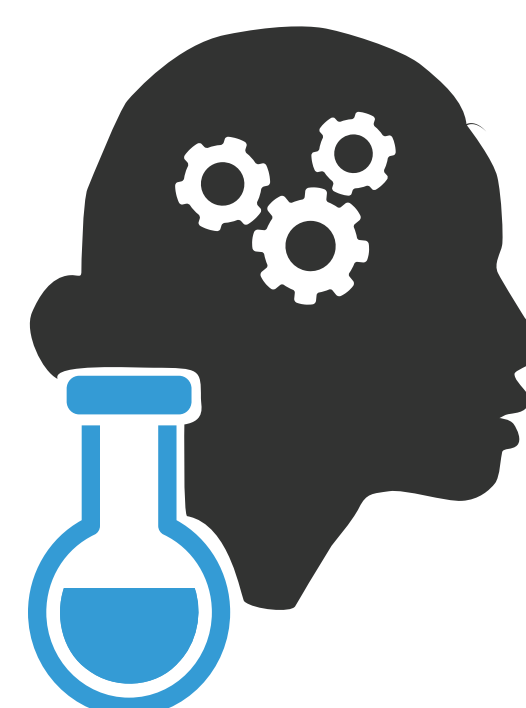
Herbert Irving Associate Professor of Medicine and Psychiatry;  
Executive Director, Center for Behavioral Cardiovascular Health;  
Associate Director, Clinical and Translational Science Award (CTSA);  
Vice Dean, Organizational Effectiveness;

Columbia University Medical Center

Chief Academic Officer, New York- Presbyterian Hospital

#### Casey Overby, PhD

Associate Professor of Medicine in the Divisions of General Internal  
Medicine and Health Sciences Informatics, Johns Hopkins University



### ORGANIZER

Behavioral, Social and Systems Science Translational Research Community, part of the Johns Hopkins Institute for Clinical and Translational Research.

The Johns Hopkins Institute for Clinical and Translational Research (ICTR) is part of the national Clinical and Translational Science Awards (CTSA) consortium, which is funded by the National Institutes of Health (NIH). The ICTR aims to bring together JHU faculty and staff members as well as external institutions, with the goal of stimulating innovative translational science and new collaborations. The ICTR's Behavioral, Social, and Systems Science Translational Research Community is devoted to highlighting translation and innovation in behavioral science, social science, and health systems science, and promoting investigator engagement and rigor in conducting these sciences.

### MOUNTCASTLE AUDITORIUM

Pre-Clinical Teaching Building / 725 N. Wolfe Street  
Contact Kelly Crowley. [kelly.crowley@jhmi.edu](mailto:kelly.crowley@jhmi.edu)



**JOHNS HOPKINS**  
INSTITUTE *for* CLINICAL &  
TRANSLATIONAL RESEARCH