



THE NUTS & BOLTS OF COMMUNITY- ENGAGED RESEARCH

FREE WORKSHOP
APRIL • 8TH • 2016
8:30 AM – 3:30 PM

The Research Participant Community Partnership Core will host a **free** workshop on Community-Engaged and Patient-Centered Research.

WHO SHOULD ATTEND?

Faculty, staff, students, local residents, patients, community advisory board members, and individuals with an interest in community-engaged research.

WORKSHOP GOALS

- Introduce community-engaged (CE) research principles
- Illustrate how CE principles are put into action
- Offer skill-building sessions on grant writing, community boards, and research dissemination.

DATE | TIME | LOCATION

Friday, April 8, 2016, 8:30 AM -3:30 PM
Johns Hopkins University School of Nursing
525 N. Wolfe Street, Carpenter Room
Baltimore, Maryland 21205

TO REGISTER GO TO

<http://tinyurl.com/nutsandboltsworkshop>

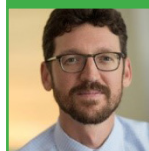
FOR MORE INFORMATION CONTACT

Crystal Evans at cevens20@jhmi.edu

Co-sponsored by the Johns Hopkins Center to Reduce Cancer Disparities

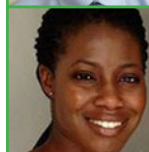
PRESENTER

AGENDA ITEM



Chris Heaney, PhD
Assistant Professor,
Johns Hopkins Bloomberg
School of Public Health

What is Community-Engaged Research?
How to tell when it is real or not?



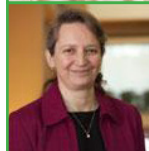
Chidinma Ibe, PhD,
Assistant Scientist,
Johns Hopkins Bloomberg
School of Public Health

A Case Study in Community-Engaged Research
Baltimore CONNECT: A Partnership between Johns Hopkins and Community Organizations to Improve Health Outcomes.



Janice Bowie, PhD,
Associate Professor,
Johns Hopkins Bloomberg
School of Public Health

The Role of Community Members in Research



Ana Rule, PhD
Assistant Scientist,
Johns Hopkins Bloomberg
School of Public Health

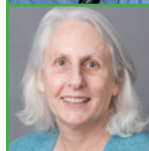
Community-Dissemination: Sharing Research Findings when the Study is Done



Clifton O. Bingham III, MD
Director of the Johns Hopkins
Arthritis Center

Getting Your Patient-Centered Proposal Funded

Developing a patient-engagement plan for your proposal.



Nancy A. Perrin, PhD
Director of the Johns Hopkins
University School of Nursing
Biostatistics & Methods Core



Ilene Wiggins RN
Senior Research Nurse
Program Manager,
AIDS Clinical Trials Group

How to Build and Maintain a Community Advisory Board for Research



Tim Brehm,
Member,
AIDS Clinical Trials Group
Community Advisory